

EXPANSION OF THE LNG TERMINAL IN POLAND AND UPDATE ON GAZ-SYSTEM INFRASTRUCTURE PROJECTS


Gas Market Development Division

GRI SSE Stakeholders Group Meeting
Prague, 27 November 2019



GAZ-SYSTEM – INTRODUCTORY INFORMATION

GAZ-SYSTEM



Certified gas TSO in PL, certified ISO (Yamal-Europe pipeline in PL)



Company with strategic significance for the economy and energy security in PL



Key integrator and facilitator of market development in the CEE and Baltic regions



LNG terminal in Świnoujście operated by its SPV, Polskie LNG



Developing infrastructure and mechanisms to enable increased consumption of natural gas as an environmentally-friendly fuel

LNG TERMINAL IN ŚWINOUJŚCIE

Regasification Capacity

5 bcm/y – currently

Storage

2 storage tanks with capacity of 160,000 cm each

Small scale services

Track loading available

Capacity booking

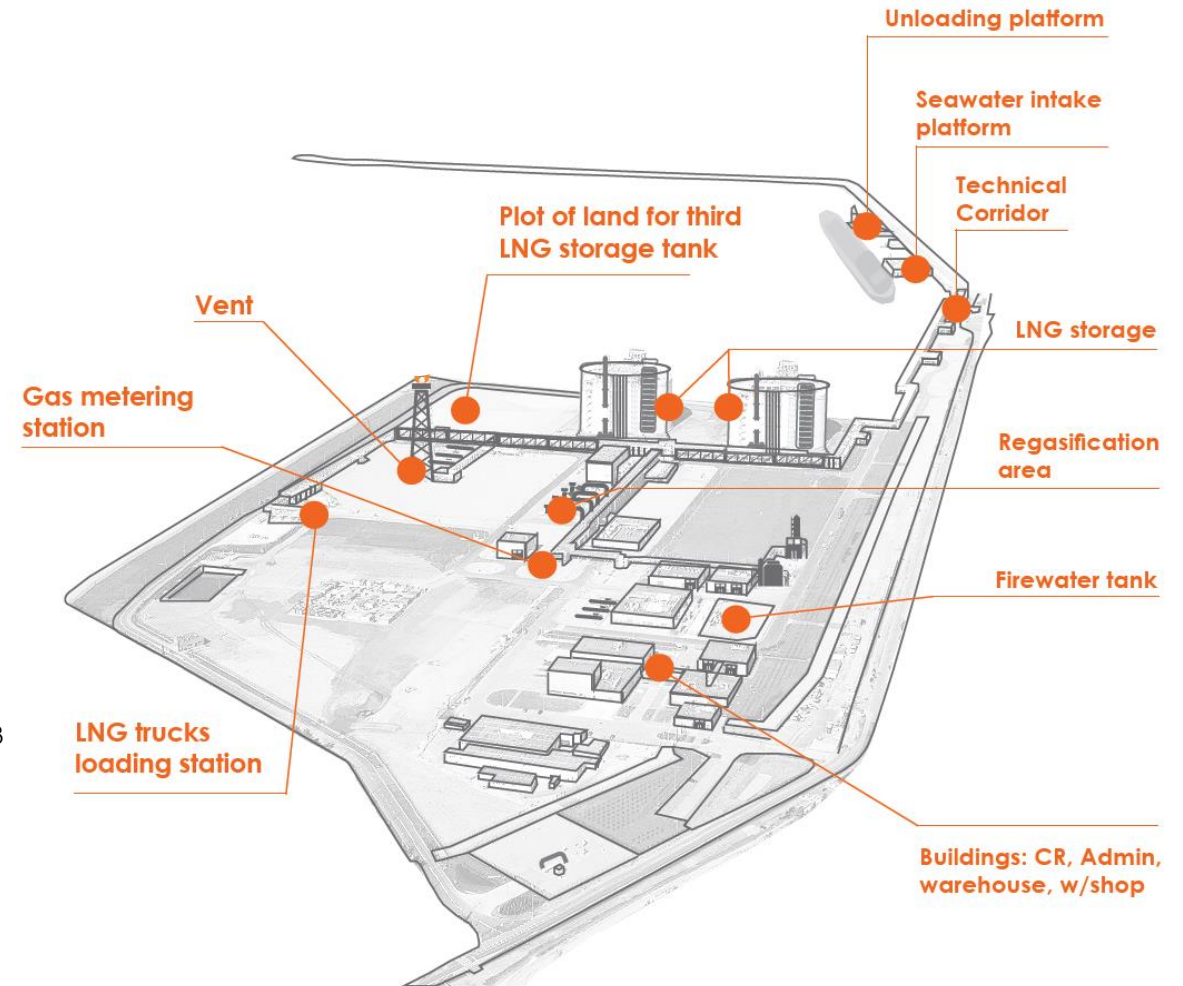
Current capacities 100% booked

Commercial operations

In commercial operation since June 2016

High utilisation rate since commissioning:

- ▶ Over 13 mln m³ of LNG unloaded equivalent to 7,6 billion Nm³
- ▶ 74 methane carriers unloaded (so far 27 vessels in 2019)
- ▶ Nearly 6000 trucks/ISO containers loaded with LNG
- ▶ 24 LNG trucks – record number of trucks loaded in one day



LNG TERMINAL IN ŚWINOUJŚCIE



LNG TERMINAL EXPANSION PROJECT

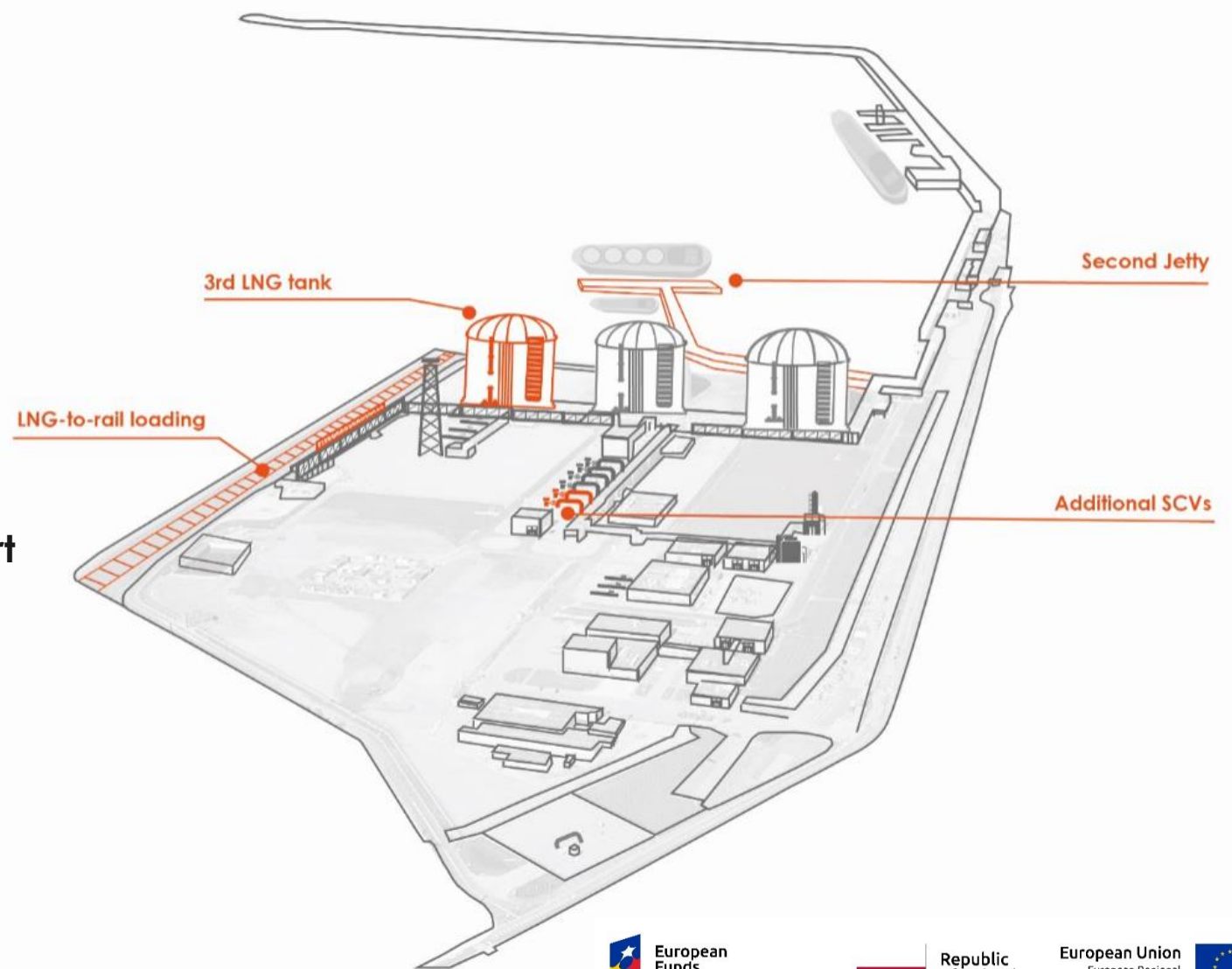
Regasification Capacity following expansion:

- ▶ 7.5 bcm/y

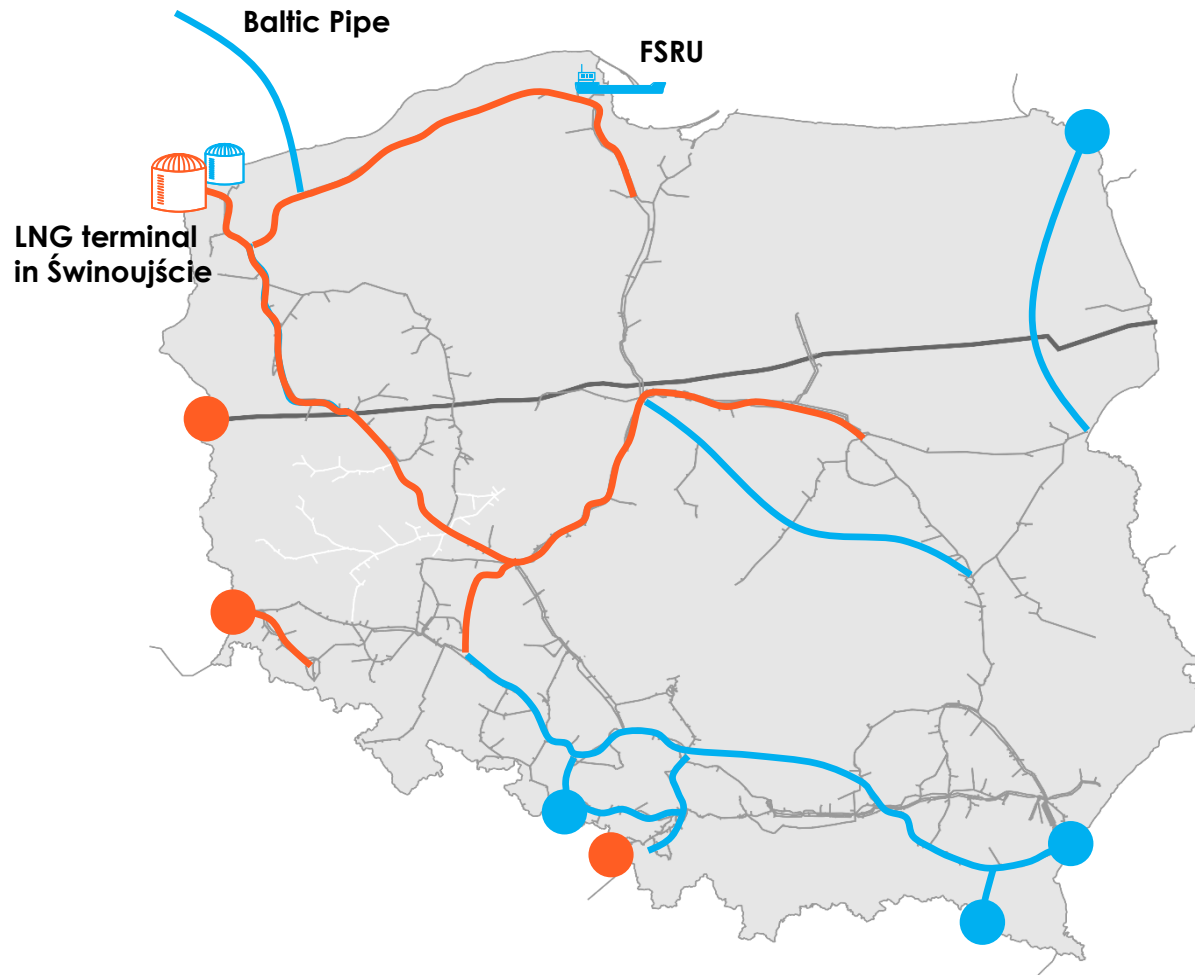
LNG Terminal Expansion Program:

- ▶ Extension of regasification capacity – SCVs
- ▶ Second Jetty
- ▶ LNG-to-rail loading and intermodal transport
- ▶ 3rd storage tank

2023 – forecasted completion of expansion



GAS INFRASTRUCTURE DEVELOPMENTS



COMMISSIONED INVESTMENT PROJECTS

- ▶ LNG terminal in Świnoujście
- ▶ Cross-border interconnections PL-CZ, PL-DE
- ▶ Reinforcement of domestic system

ONGOING INVESTMENT PROJECTS

- ▶ Extension of LNG terminal in Świnoujście
- ▶ Baltic Pipe
- ▶ FSRU Gdańsk
- ▶ Cross-border interconnections PL-LT, PL-SK, PL-UA, PL-CZ
- ▶ Reinforcement of domestic system

PROVIDING NEW POSSIBILITIES TO THE CEE/BALTIC REGION

BALTIC PIPE (2022)

Ongoing design phase, construction works as of 2020

3 bcm/y towards DK
10 bcm/y towards PL

LNG TERMINAL (2023)

Ongoing tendering for the construction works

Capacity upgrade: 7,5 bcm/y

PL-SK INTERCONNECTION (2022)

Under construction

4.7 bcm/y towards SK
5.7 bcm/y towards PL

PL-LT INTERCONNECTION (2021)

Ongoing tendering for the construction works

2.4 bcm/y towards LT
1.9 bcm/y towards PL



PLANNED EXPANSION OF INFRASTRUCTURE

FSRU IN PORT OF GDAŃSK (2025)

Ongoing design phase

Capacity (I stage): 4,5 bcm/y

PL-CZ INTERCONNECTION

Design phase completed in Poland

Project under evaluation,
ongoing incremental process

PL-UA INTERCONNECTION

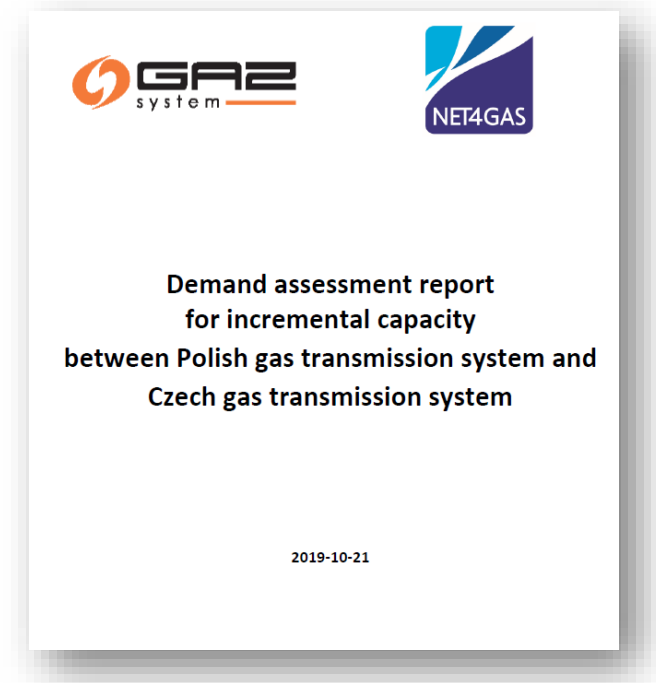
Design phase completed in Poland

Project under evaluation

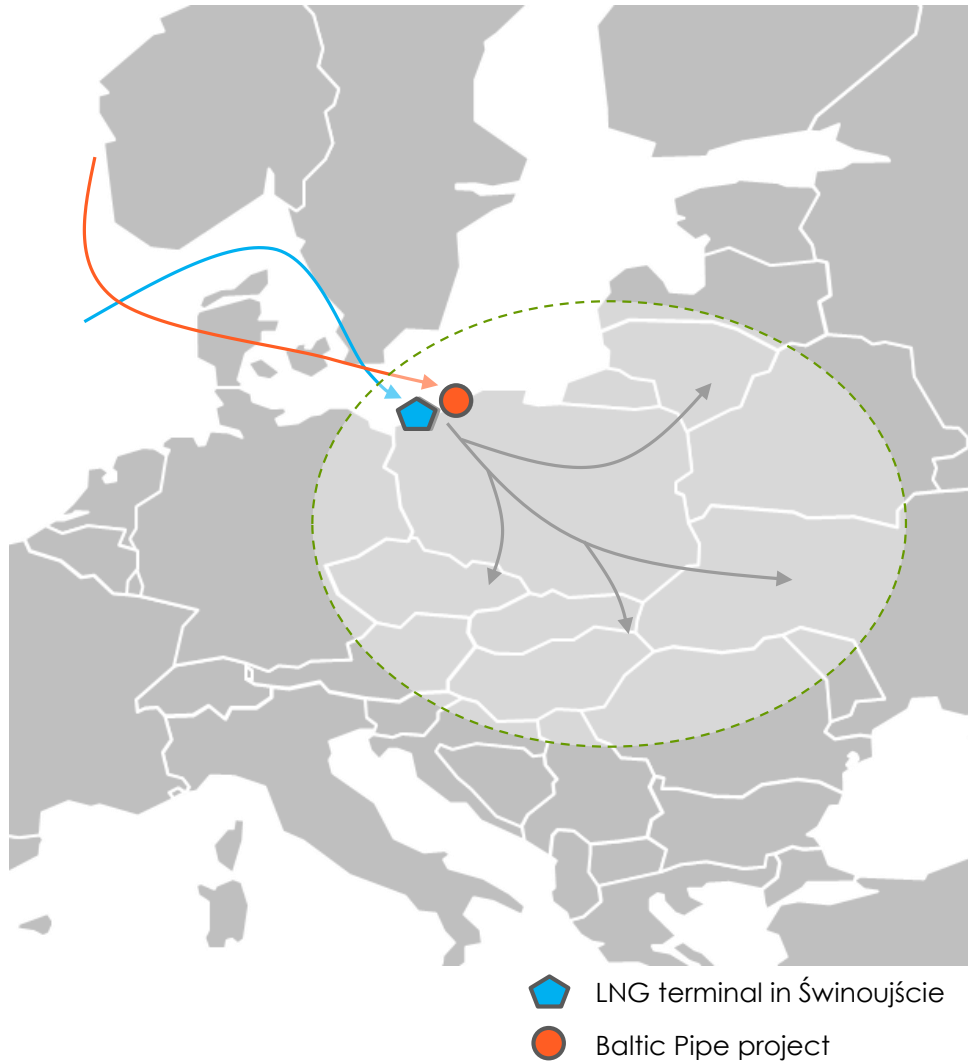
DEVELOPMENT OF CONNECTION BETWEEN POLAND AND CZECH REPUBLIC

INCREMENTAL CAPACITY PROCESS 2019 (NC CAM):

- ▶ **GAZ-SYSTEM** and **NET4GAS** received a non-binding demand indications for firm capacity between the entry-exit system of Poland and the entry-exit system of Czech Republic.
- ▶ Incremental capacity was requested in direction from Poland to the Czech Republic.
- ▶ Based on the evaluation of the received non-binding demand indications, an incremental capacity project was initiated and GAZ-SYSTEM and N4G are currently running technical analysis.
- ▶ **13 January 2020** - draft project proposal of the incremental capacity project on the border between Poland and the Czech Republic to be published for consultation.



NORTHERN GATEWAY PROJECT



THE ASSUMPTIONS:

- ▶ Diversification
- ▶ Gas-to-gas competition
- ▶ Flexible and efficient gas infrastructure
- ▶ Regional gas market

LNG SUPPLIES VIA TERMINAL IN ŚWINOUJŚCIE

NORWEGIAN SUPPLIES BY BALTIC PIPE PROJECT

THANK YOU FOR ATTENTION

