

# Completion of Transmission System Upgrade in Slovenia

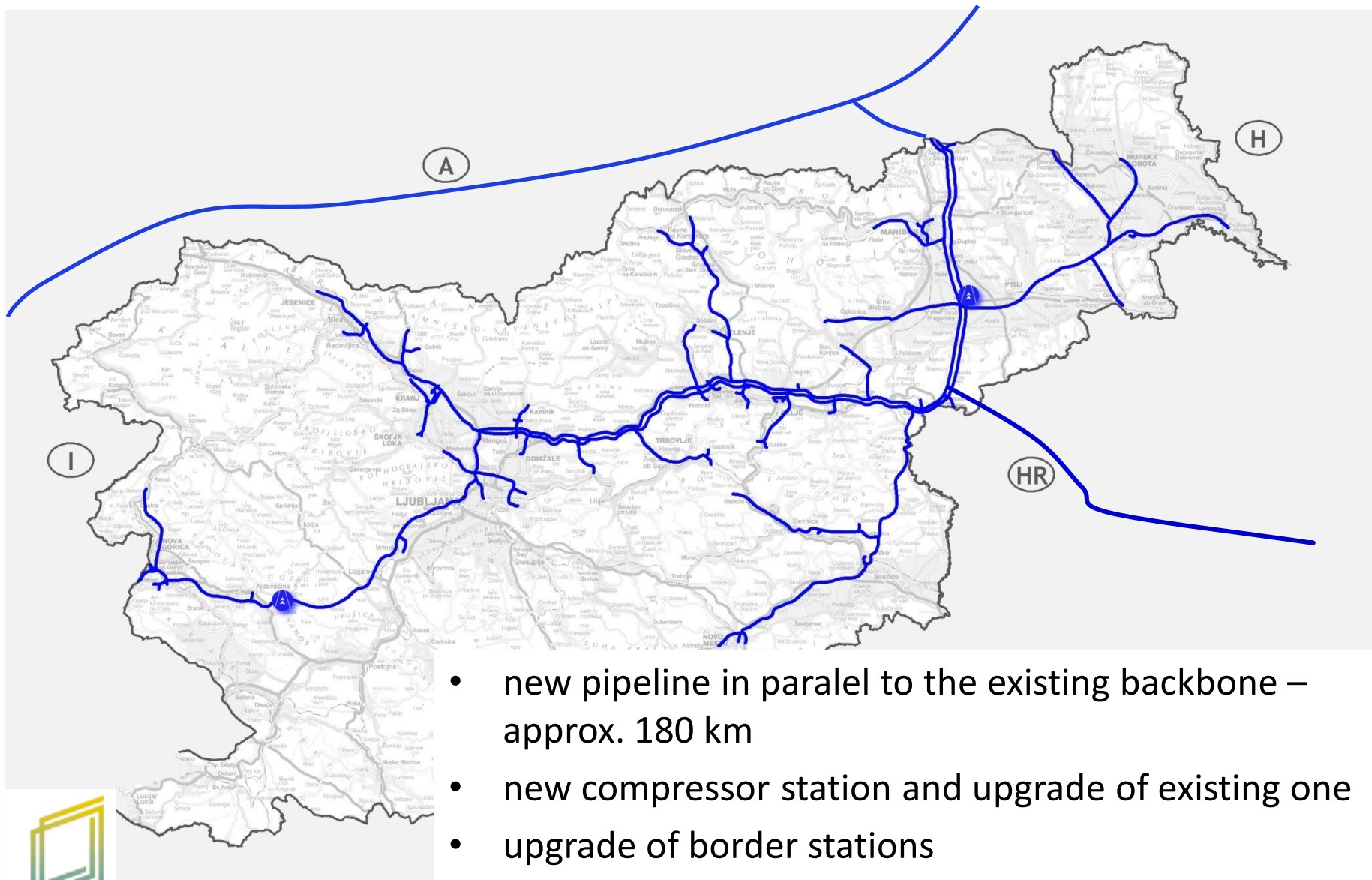
—

new capacities and new flexibility available

Marko Ileršič, MScBA  
Plinovodi d.o.o., Slovenia

Gas Regional Initiative SSE, Bucharest, 12.12.2014





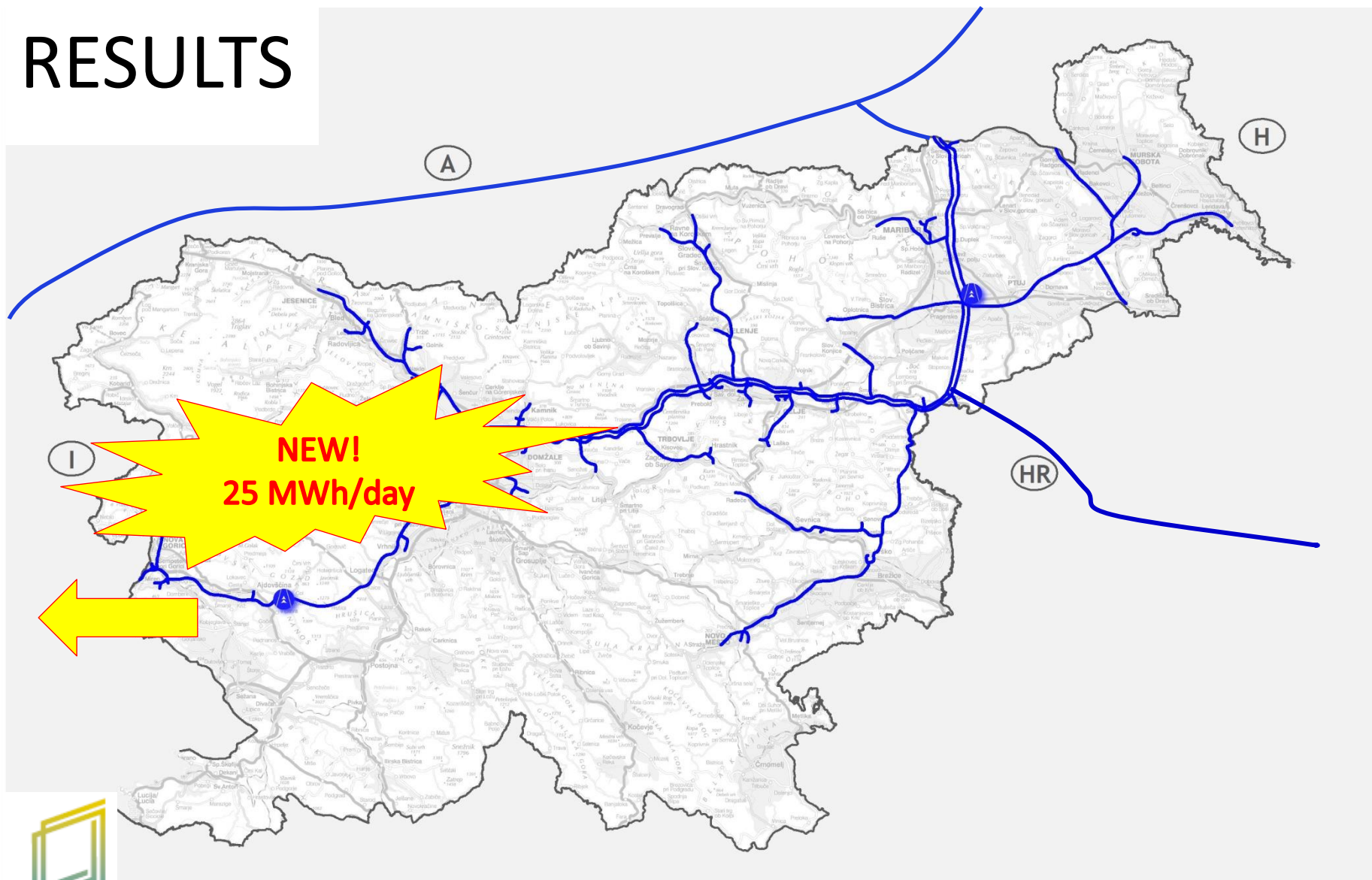
- new pipeline in paralel to the existing backbone – approx. 180 km
- new compressor station and upgrade of existing one
- upgrade of border stations



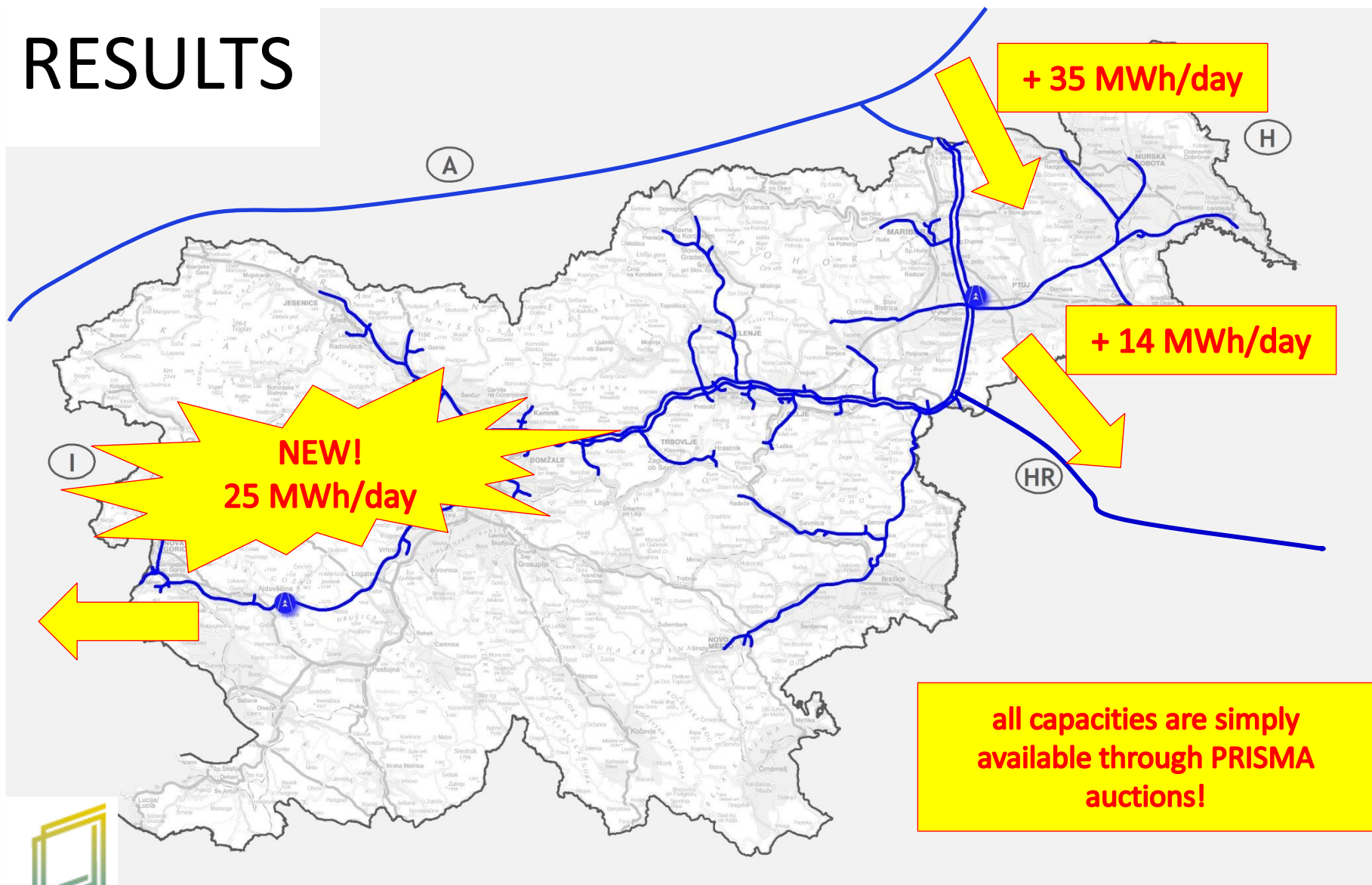




# RESULTS



# RESULTS



**+ 35 MWh/day**

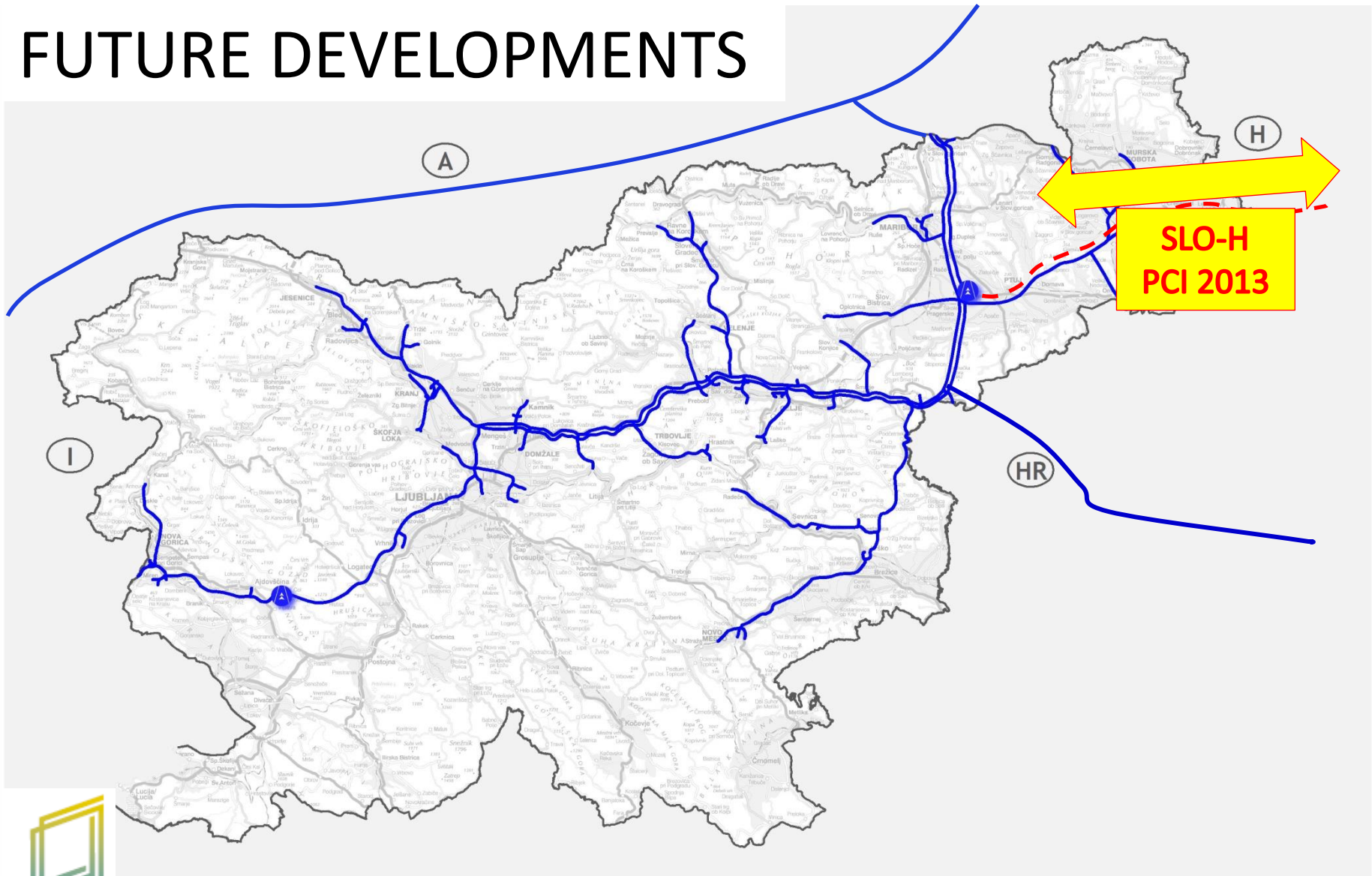
**+ 14 MWh/day**

**NEW!  
25 MWh/day**

**all capacities are simply  
available through PRISMA  
auctions!**



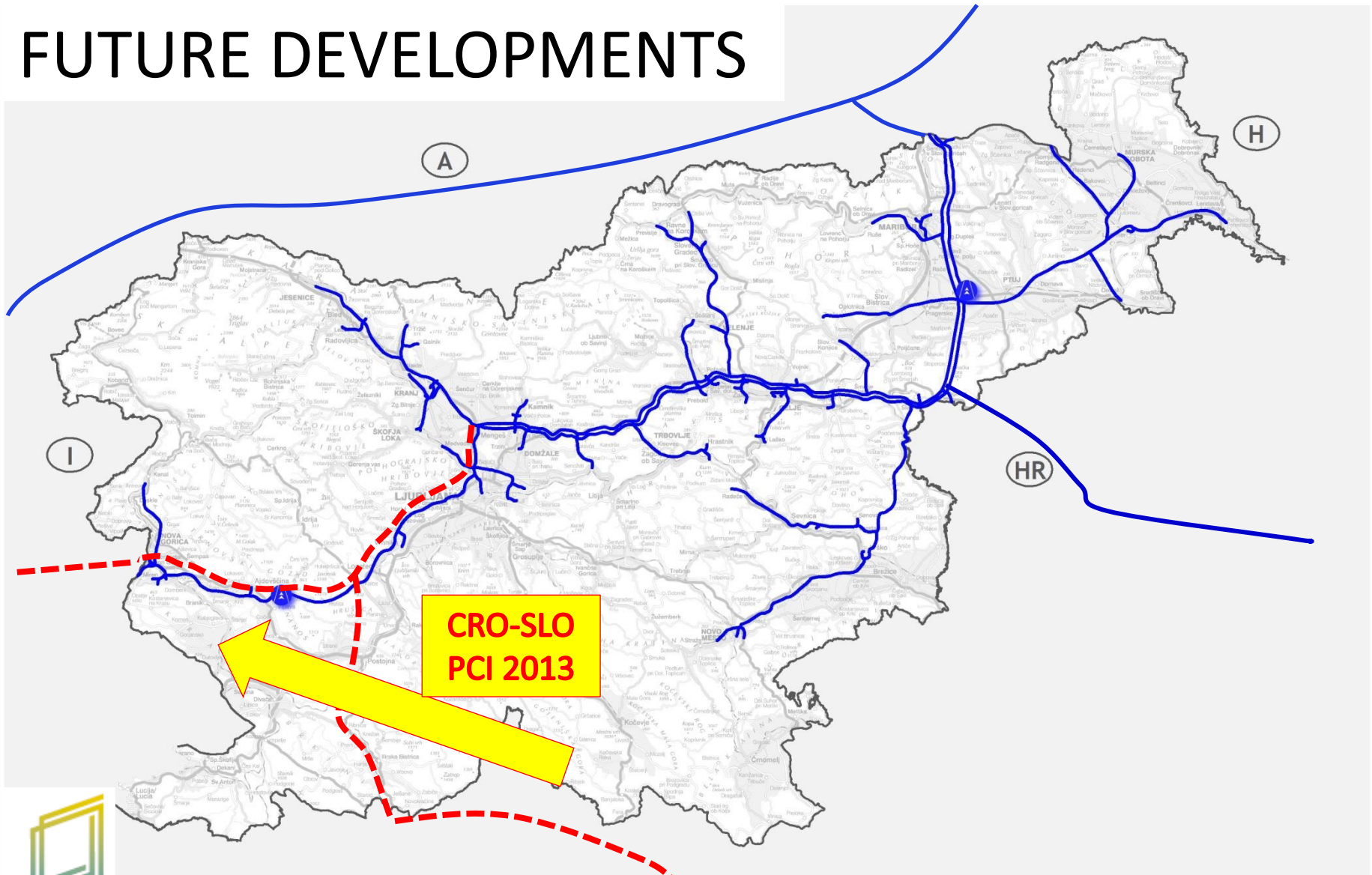
# FUTURE DEVELOPMENTS



**SLO-H  
PCI 2013**



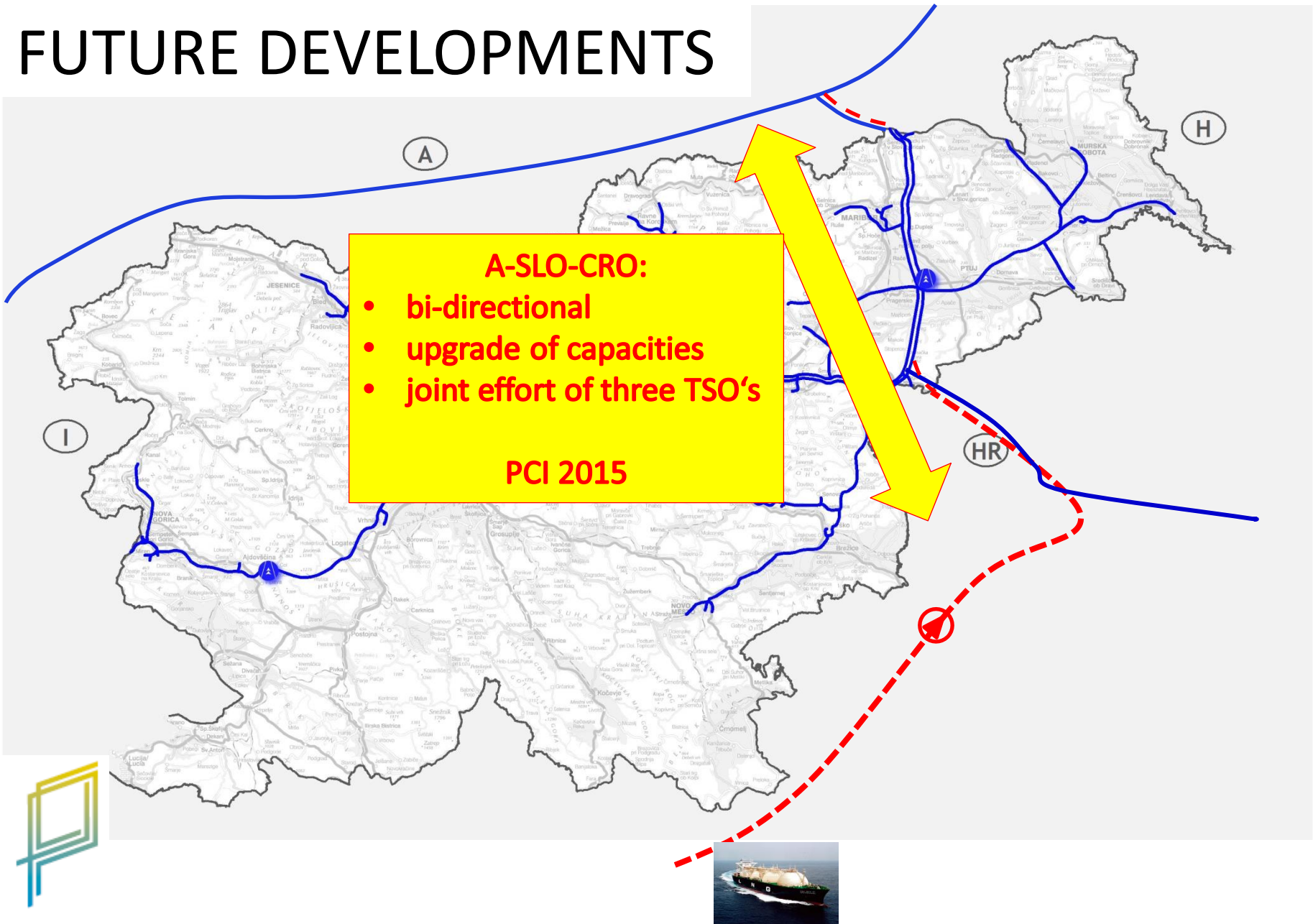
# FUTURE DEVELOPMENTS



**CRO-SLO  
PCI 2013**



# FUTURE DEVELOPMENTS





Thank you for your attention!

[marko.ilersic@plinovodi.si](mailto:marko.ilersic@plinovodi.si)

