



2014

TRANSGAZ

PCI Projects and Future Development Plans

**17th Stakeholder Group Meeting
GAS REGIONAL INITIATIVE – SOUTH SOUTH-EAST**

Given its geographical position, Romania is located at the crossroads between the well developed markets in Central Europe and supply sources in south east.

2



Creating access to important supply sources

- ✓ *Black Sea offshore*
- ✓ *Caspian gas coming via Bulgaria*

Romania becomes a bridge towards Central Europe (Hungary, Austria, Germany, Slovakia) and Eastern Europe (Ukraine, Moldavia)

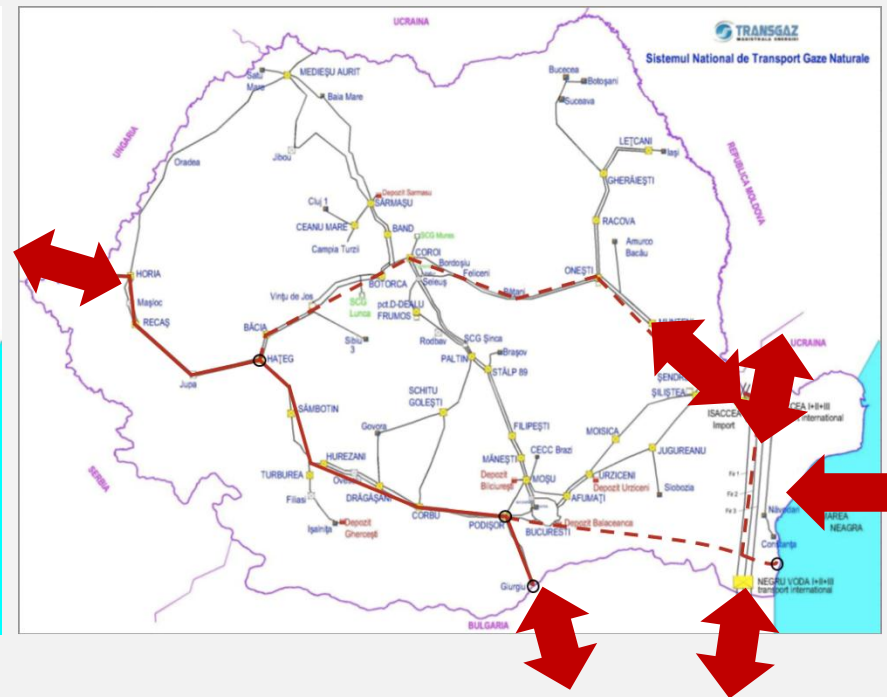
Major Challenge:

Transforming a rather old and partly obsolete grid into a high pressure system, ensuring interconnections and transmission routes along the region

3

Therefore, we need to reach from here . . .

. . . to here!



Romanian Gas Infrastructure Projects included in the Current PCI List (promoter: TRANSGAZ)

4



1. Integration of the transit and transmission systems with reverse flow at Isaccea (project no. 6.15)
2. Reverse flow Romania – Hungary (project no. 6.14)
3. Gas pipeline Constanta – Arad – Csanadpalota, cluster with AGRI LNG (project no. 6.22.1)
4. Gas pipeline from Bulgaria to Austria via Romania and Hungary (project no. 7.1.5)

During the past 12 months, Transgaz performed several studies and adapted its Ten Years Development Plan according to the new scenarios on the gas market.

Development on the Romanian territory of the transmission corridor between Bulgaria and Austria via Romania and Hungary - PCI Project no. 7.1.5

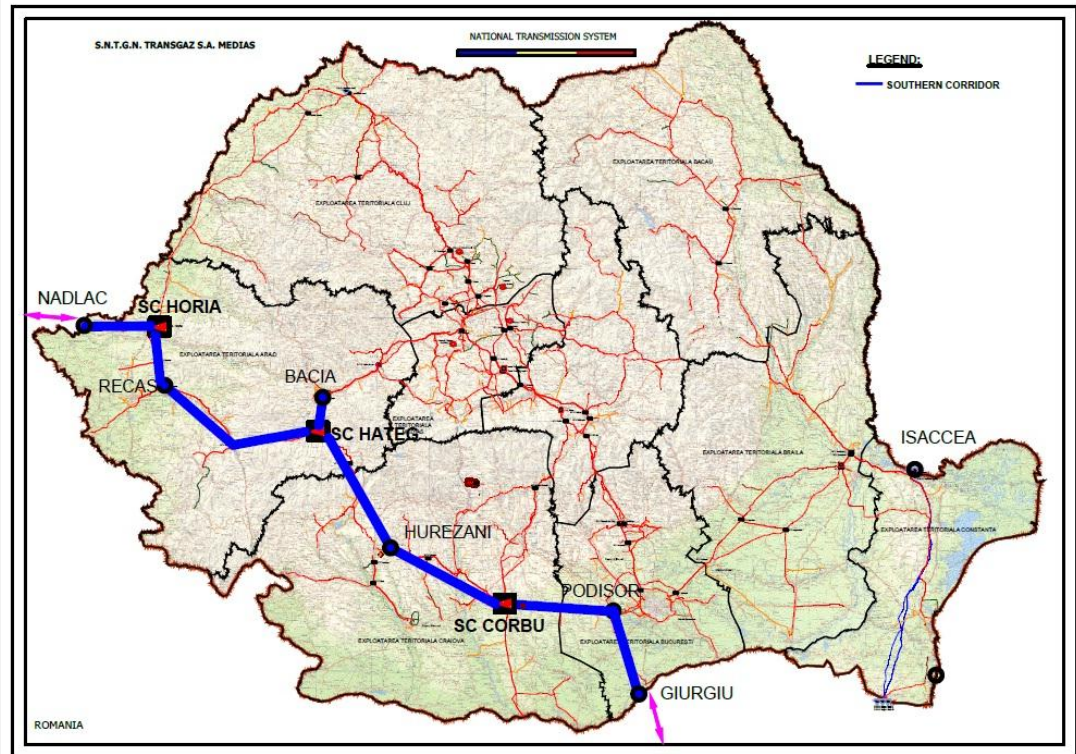
SCOPE

Construction of a new corridor granting access to Caspian gas supplies via Greece and Bulgaria.

Through the existing interconnectors gas volumes may be also delivered towards Bulgaria, Hungary and other countries in Central Europe.

Project description:

- **Total length: 550 km**
- **3 new compressor stations**
- **Total investment: 560 mil Euro**
- **Deadline: Q1 2019**



2. Development of the Southern transmission route for granting access to supply sources in the Black Sea region

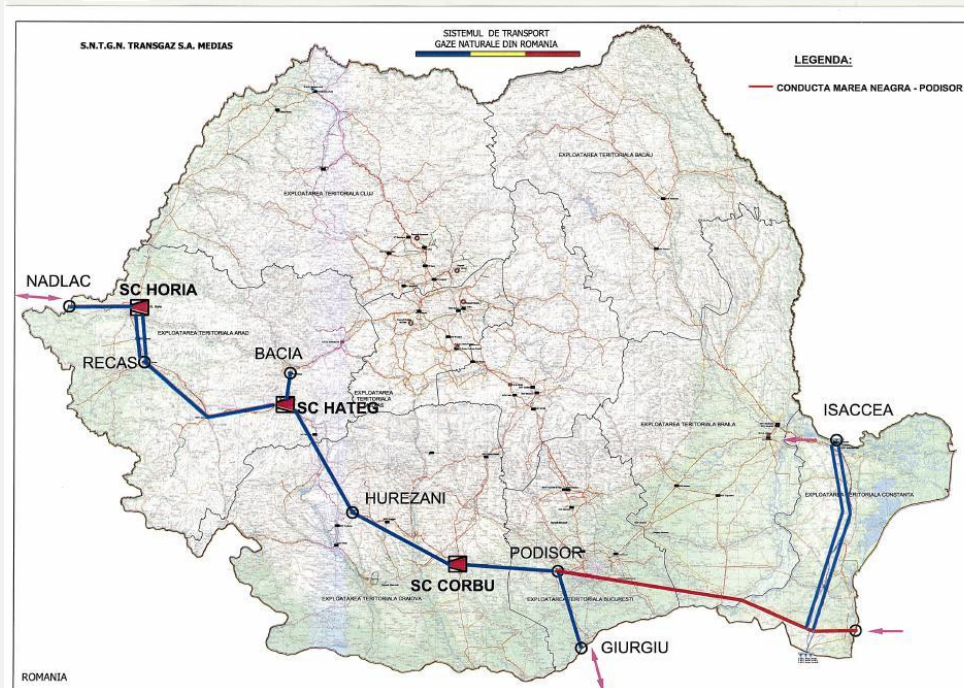
8

The pipeline Tuzla – Podisor will complete the corridor by creating the connection between the BG – HU corridor and the Black Sea shore.

Pipeline length: 250 km

Estimated cost: 255 mil Euro

Deadline: 2019



The project has been included in the next edition of the TYNDP and will be proposed for the next PCI list.

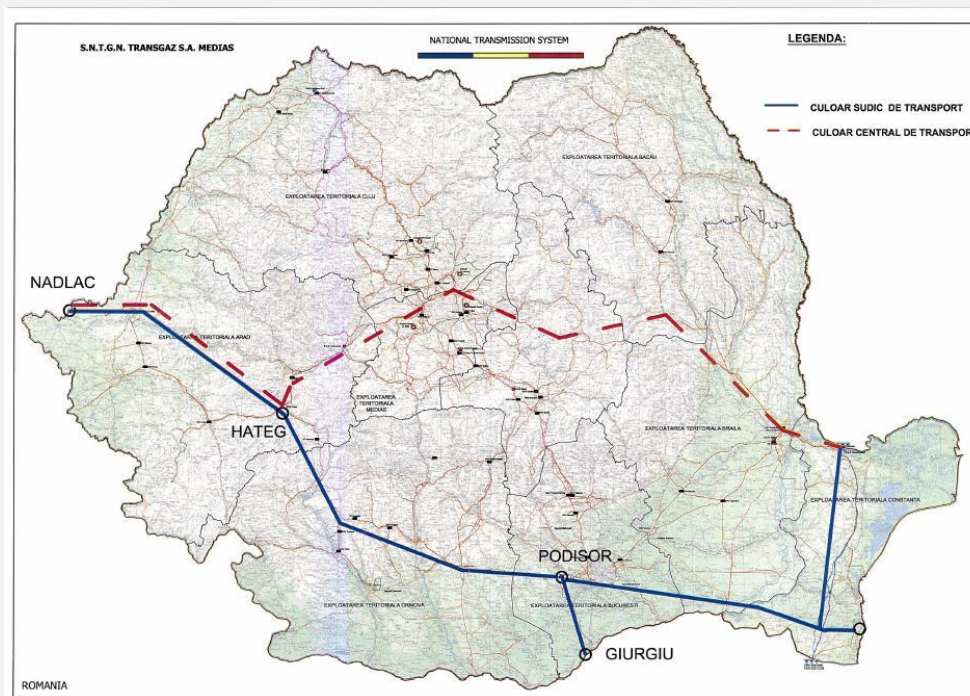
MAIN PROJECTS - The Central Corridor

9

Considering the huge potential of the Romanian Black Sea offshore, a second transmission corridor is envisaged through the central part of the country connecting the Black Sea shore with the Western border.

Scope of works:

- *Rehabilitation of around 400 km of existing pipeline sections*
- *430 km of new pipelines*
- *4 new compressor stations with an installed capacity of 66 MW*



Estimated investment: 550 mil Euro

MAIN PROJECTS - The Central Corridor

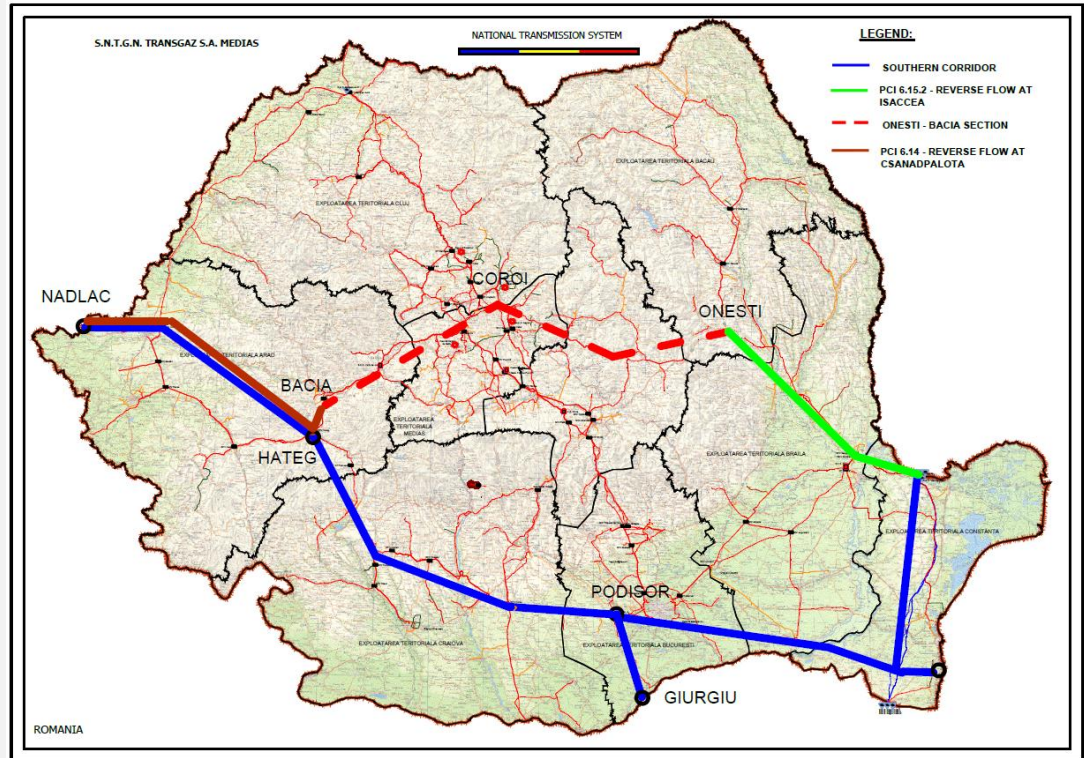
8

The Central Corridor consists of three projects, two of them being already on the current list of PCI projects:

- *Reverse flow RO – HU (project no. 6.14)*
- *Integration of transmission and transit system and reverse flow in Isaccea (project no. 6.15)*

Section Onesti-Bacia (red dotted line) to be proposed for the next PCI list.

We are currently preparing the investment request for project no. 6.15



MAIN PROJECTS - Development of transmission capacities towards the Republic of Moldavia

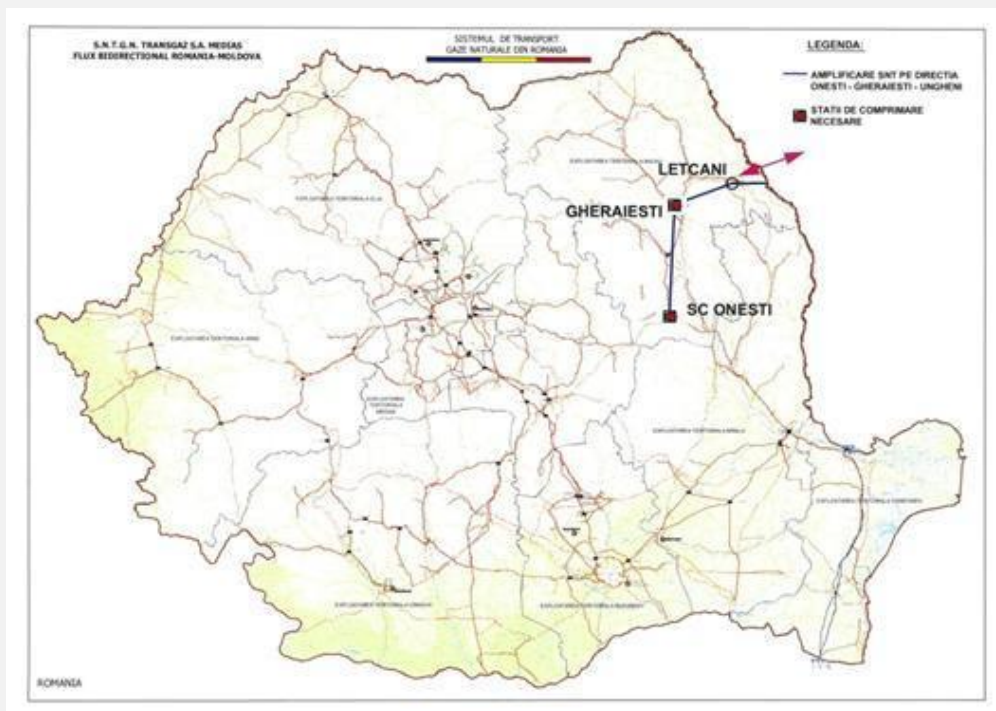
10

- *Interconnection with Moldavia was finalized this year*
- *Further developments needed for increasing transmission capacity*
- *Investment objectives:*
 - 2 new compressor stations
 - 2 new pipeline sections with a total length of 160 km

Estimated Deadline:

December 2016

Estimated costs: 110 million Euro





***Thank you
for your kind attention***